

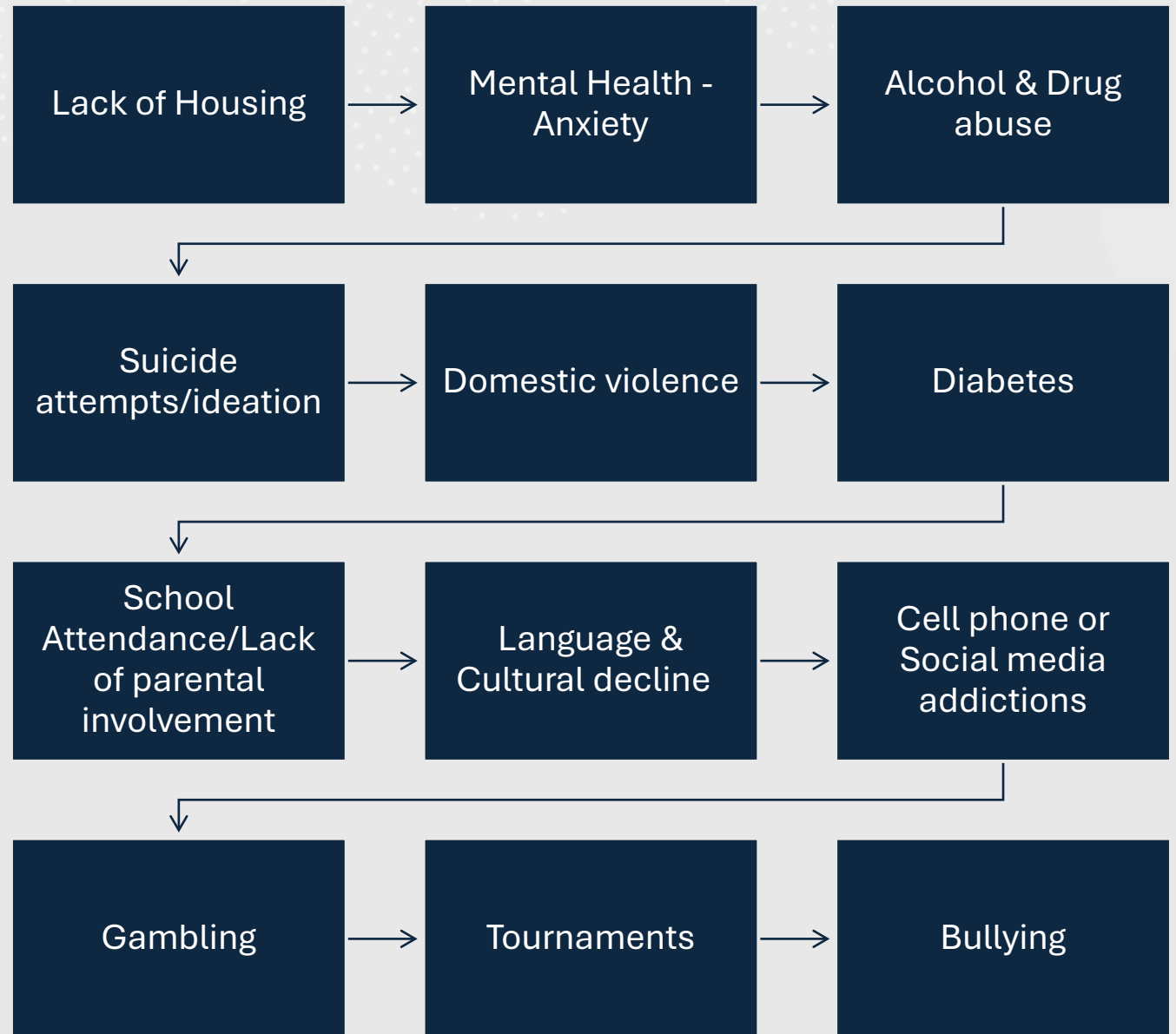
Connect Forum

Chisasibi

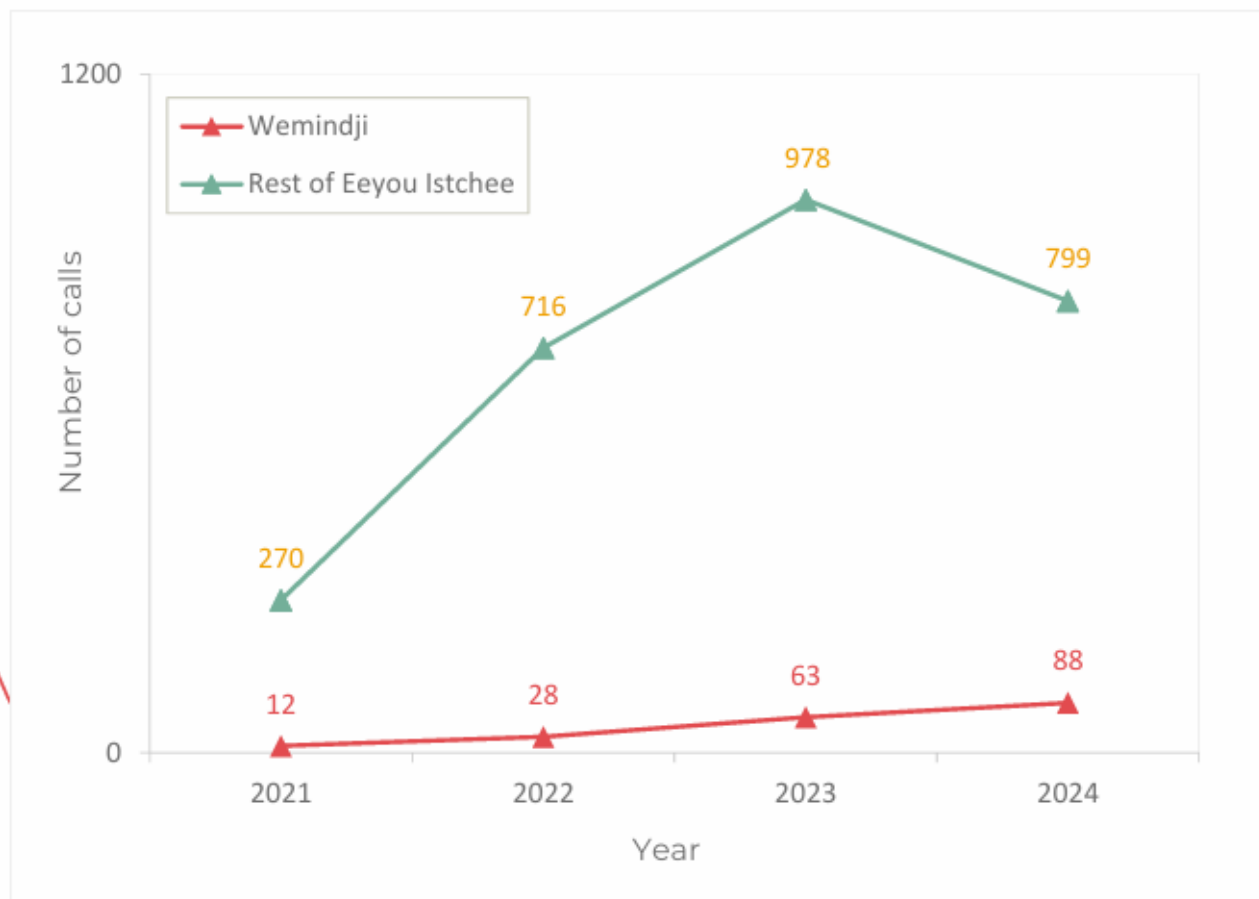
March 17-19, 2026



Describe Current Social Issues Prevalent in Wemindji



Asking for help: Overview of the Wîchihîwâuwin helpline



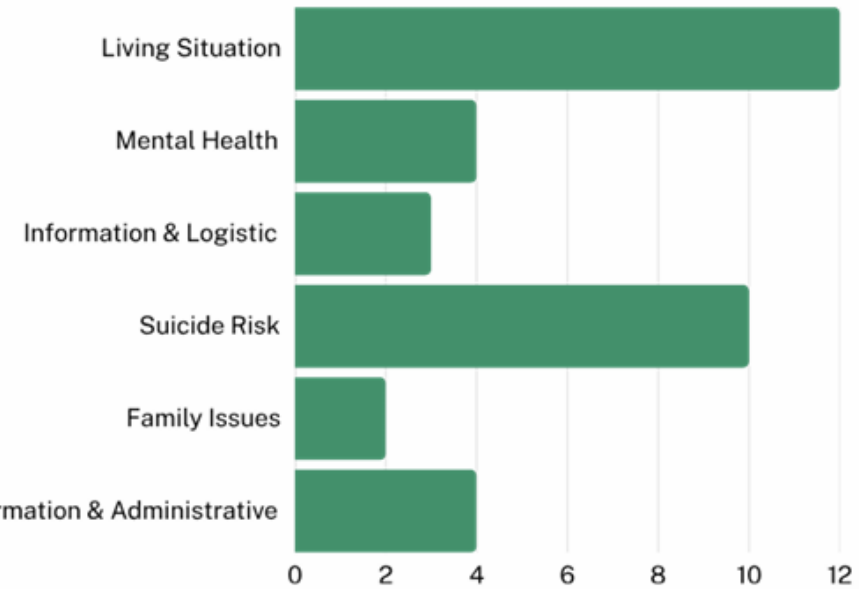
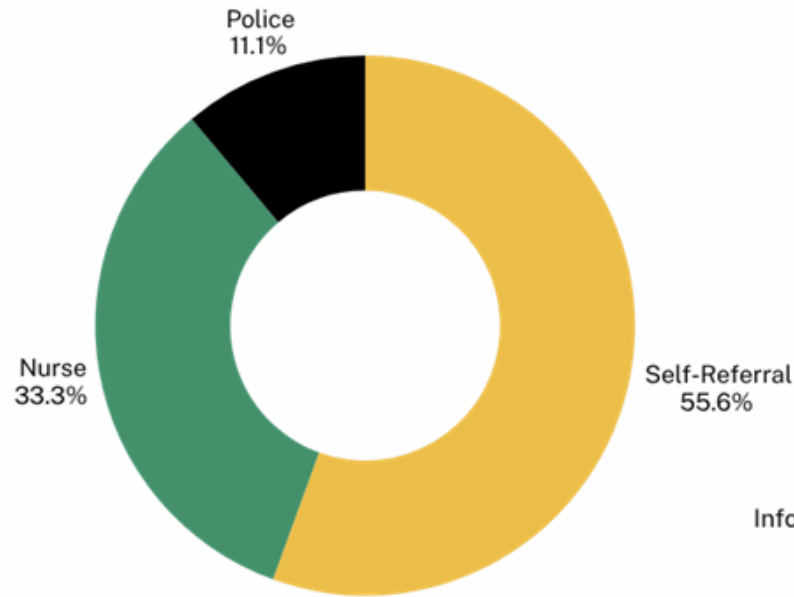
Increase calls from 12 in 2021 to 88 in 2024

Total calls (2021 to 2024)

191 calls by individuals identifying as residents of Wemindji

Represents **7%** of all calls received in the region.

WEMINDJI 2024-2025



148

CALLERS

37

DEPLOYMENTS

COMMUNITY-FOCUSED SUMMARY

For Wemindji, the primary callers requesting psychosocial support were individuals calling for themselves, nurses and the police. The main reasons for deploying workers were homelessness, suicide ideation and mental health reasons such as anxiety and grief.





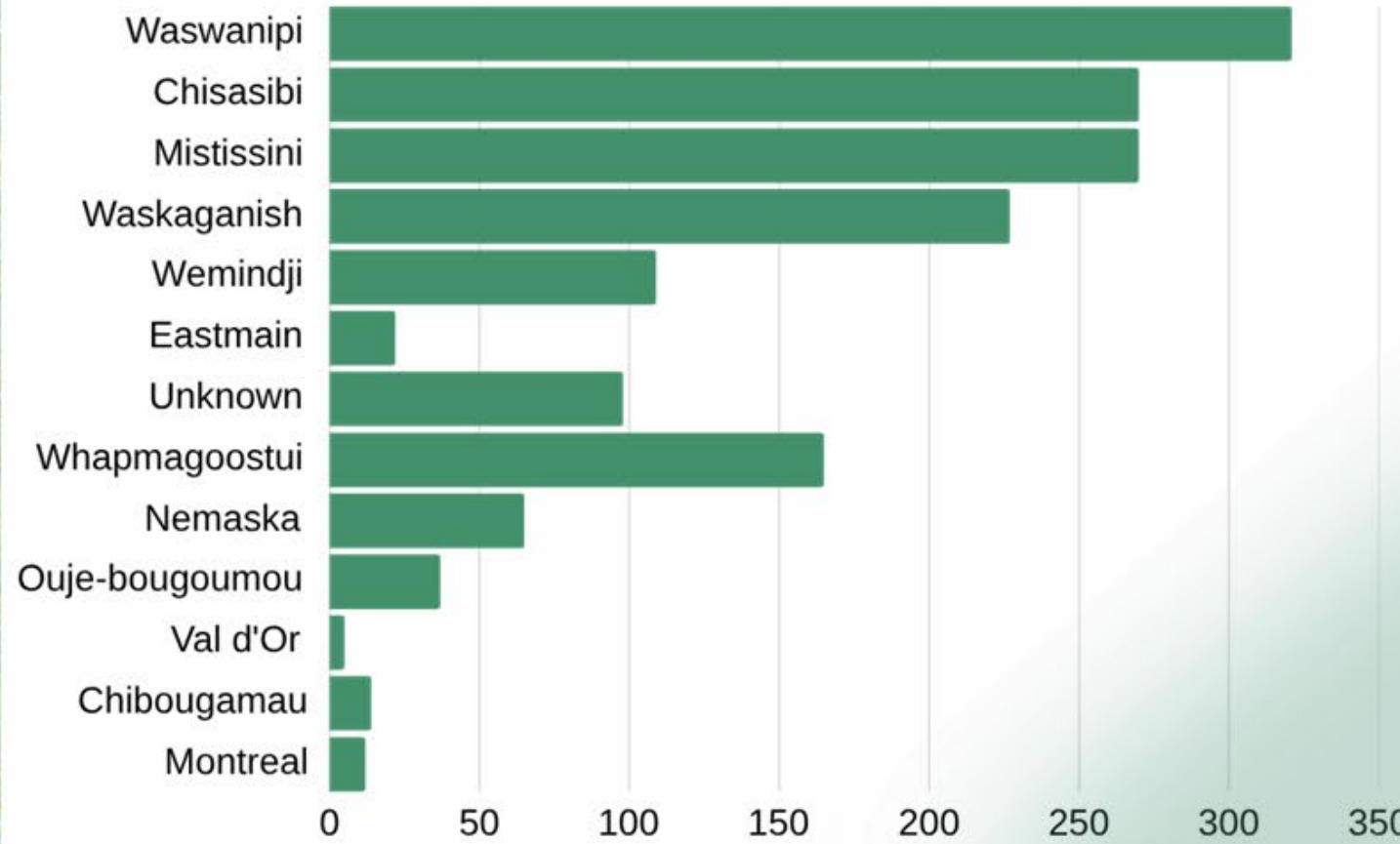
MAP OF EEYOU ISTCHEE



1589
CALLS
7 MONTHS

CALLS BY COMMUNITY

We have visited Nemaska in June and Oujé-bougoumou in October. Both communities will be implementing our pathway of service.



Hospitalizations related to alcohol use

Alcohol-related disorders

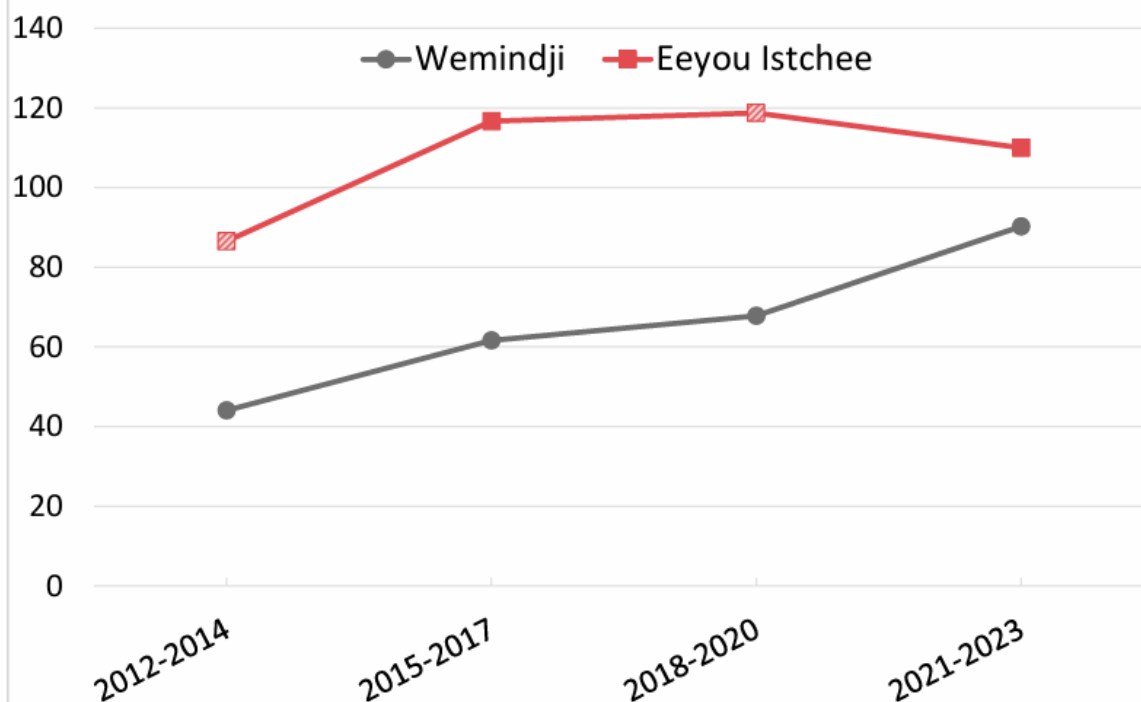
A similar **increasing trend** is observed in Wemindji and the rest of Eeyou Istchee.



The hospitalization rates in 2021-2023 is **significantly lower in Wemindji** compared to the rest of Eeyou Istchee.



Hospitalization rate (per 10,000 people) of disorders related to alcohol by 3-year period, 2012-14 to 2021-23



Hospitalizations for which the primary and secondary diagnosis was related to substance use.

▨ The estimate should be interpreted with caution

Source : MED-ÉCHO, 2007-09 to 2022-24.

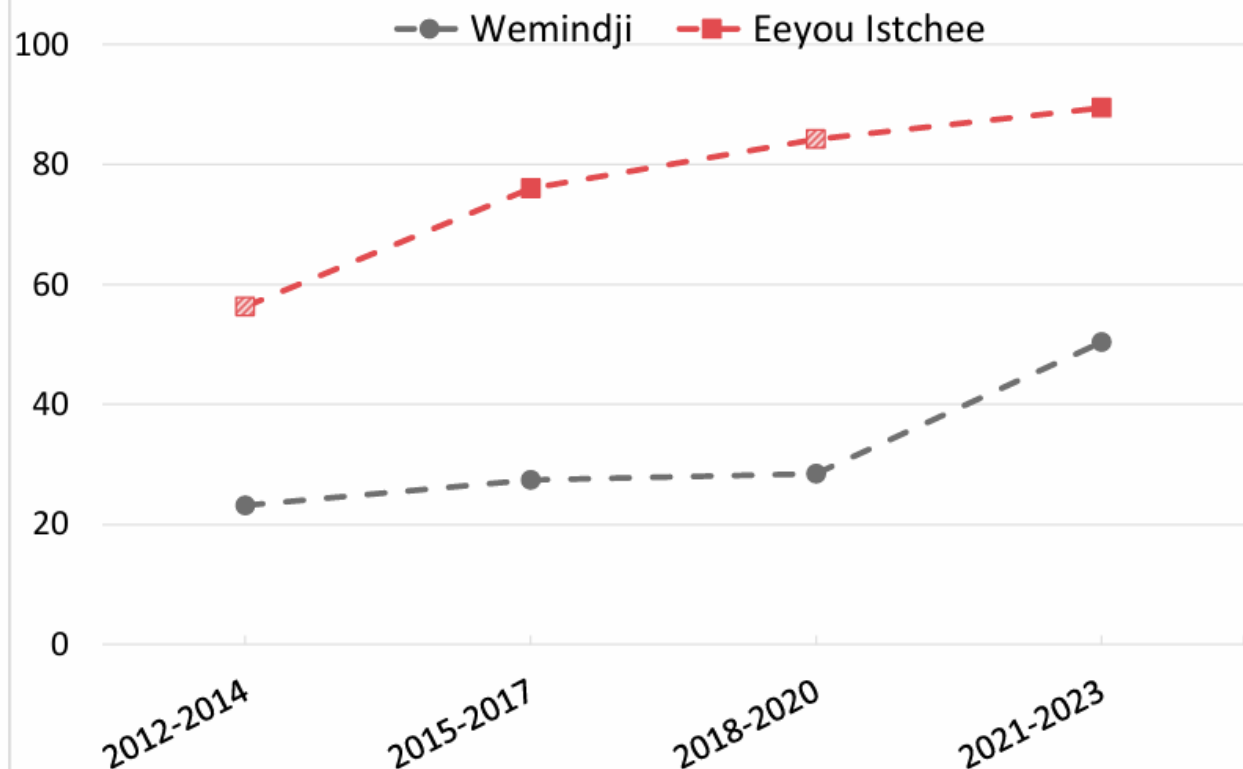
Hospitalizations related to substance use

Substance-related disorders

A similar **increasing trend** is observed in Wemindji and the rest of Eeyou Istchee.

The hospitalization rates in 2021-2023 is **significantly lower in Wemindji** compared to the rest of Eeyou Istchee.

Hospitalization rate (per 10,000 people) of disorders related to substance use by 3-year period, 2012-14 to 2021-23



Hospitalizations for which the primary and secondary diagnosis was related to substance use.

■ The estimate should be interpreted with caution

Source : MED-ÉCHO, 2007-09 to 2022-24.

EEPF Reported crimes - Wemindji

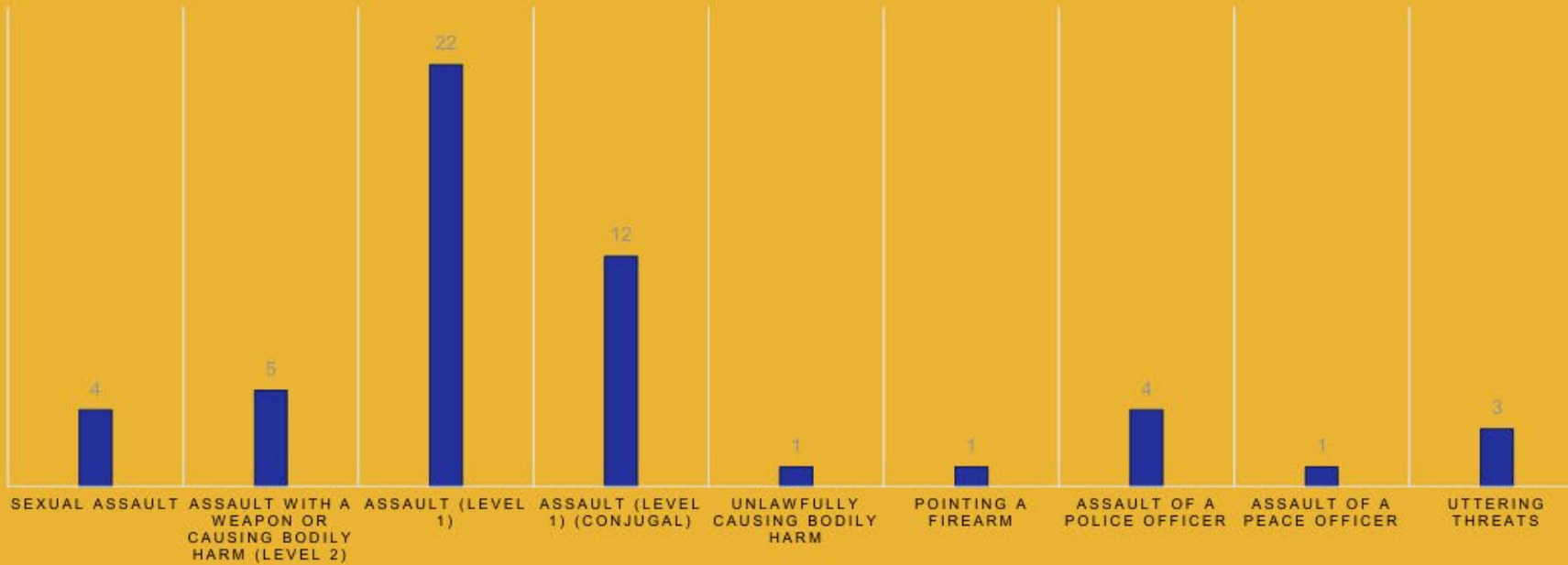
53 reported crimes

95 to 98 % of calls are alcohol
& drug substance related

75 % are male

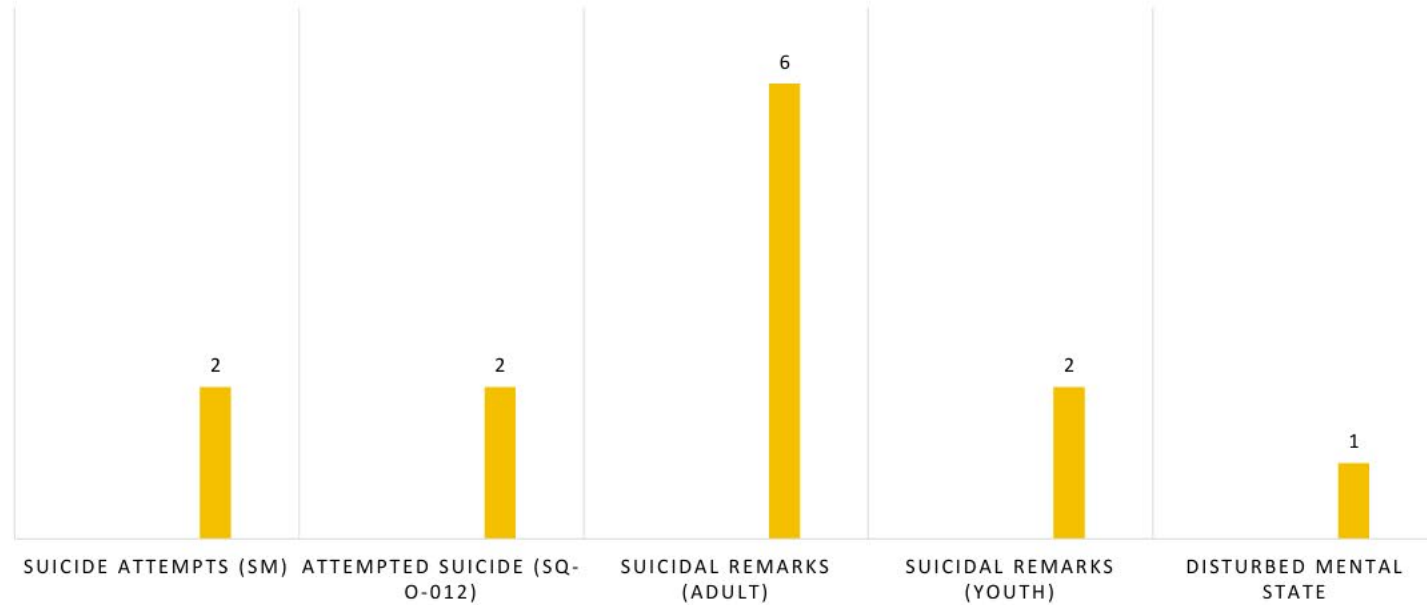


WEMINDJI - CRIMES AGAINST PERSONS





WEMINDJI



Suicide Statistics Reported Incidents (13)

- 4 Attempts
- Suicidal remarks; 6 adults, 2 Youth
- Disturbed mental state 1
- CHB stats higher (not reported to EEPF)

Diabetes



48% of the population 20 and over are living with either:

- ❖ pre-diabetics OR
- ❖ type 2 diabetics

40% of men have either pre-diabetes or type 2 diabetes



55% of women have either pre-diabetes or type 2 diabetes

In the last 30 years, the number of adults newly diagnosed with type 2 diabetes has increased by **4 times.**



TYPE 2 DIABETES & PRE-DIABETES COMMUNITY STATISTICAL SNAPSHOT

WEMINDJI - PEOPLE LIVING WITH DIABETES & PRE-DIABETES

FIGURE 1

Percentage (%) of adults aged 20 and over living with type 2 diabetes, 1993-2021

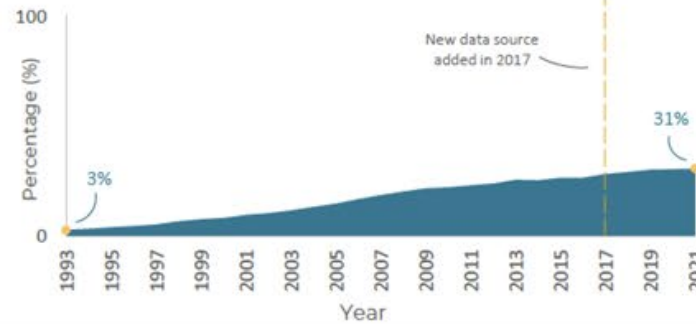
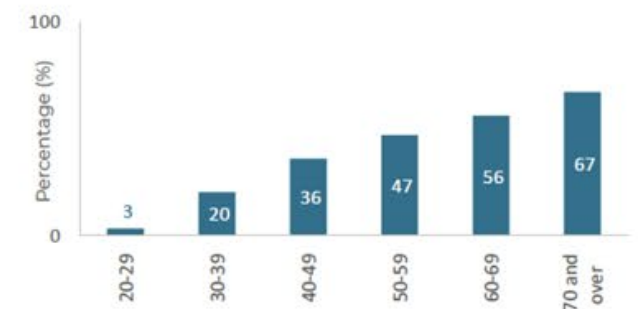


FIGURE 2

Percentage (%) of adults aged 20 and over living with type 2 diabetes, by age group, 2021



Cost of Basic Nutritious Food



Cost per week for basic nutritious food (family of four)



Average cost is **lower in Wemindji** compared to Eeyou Istchee.

4.5% increased in Wemindji between 2021 and 2024.

Lowest increased compared to all other Cree communities*, elsewhere the increase ranged from 13% to 25%, for the same period.

Cost per week for basic nutritious food for a family of four, 2024



*Excluding Uujé-Bougoumou.

Note: The average cost for coastal communities is inclusive of Wemindji. Average cost of inland communities and Eeyou Istchee is inclusive of Uujé-Bougoumou.

Source : Access to a nutritious and affordable food basket in Eeyou Istchee 2024 update. Cree Board of Health and Social Services of James Bay (CBHSSJB), July 2025



Education



Graduation rate

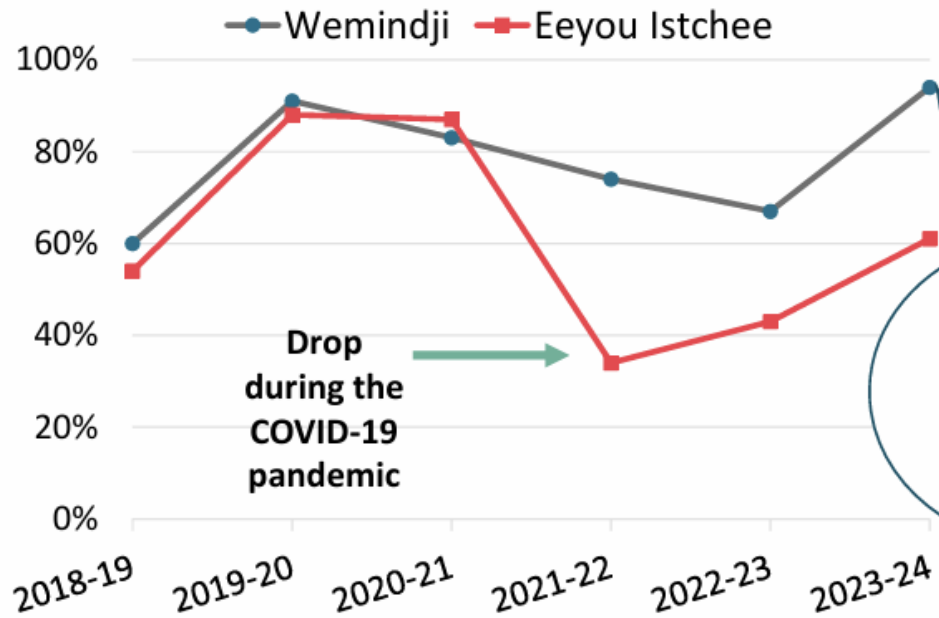
94%

obtained a high school diploma in 2023-2024. It is the highest graduation rate in Eeyou Istchee

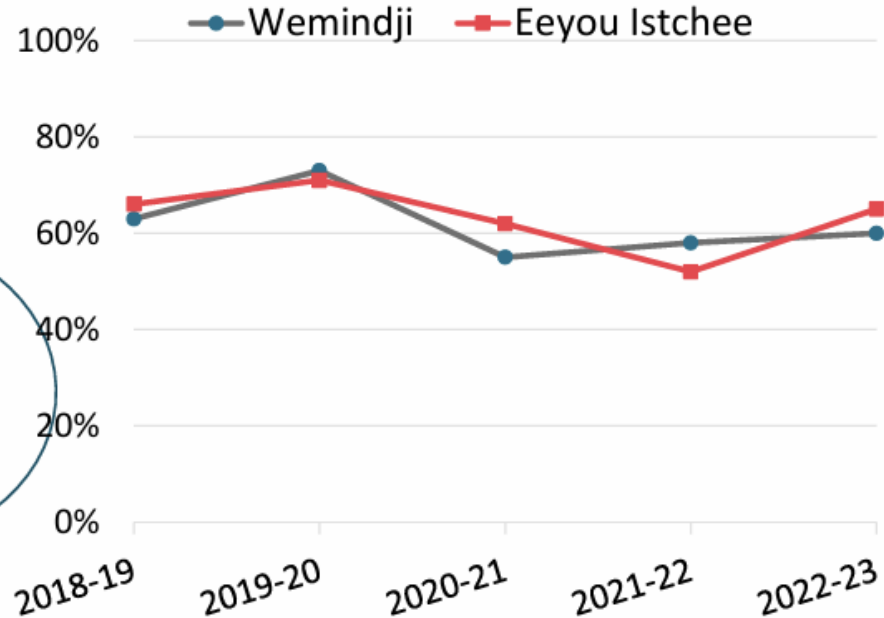
60%

successfully completed their post-secondary school year or graduate in 2022-23.

Secondary 5 success rate, 2018-19 to 2023-24



Post-secondary success rate, 2018-19 to 2022-23



Attendance Report *



* Excluding Workshop Courses

School

École Joy Ottereyes Rainbow Memorial School

Year

All

Term

All

Attendance Statistics

	No. of Absences	Expected Attendances	Absence Rate	Attendance Rate
Primary 1	556	3,764	14.3%	85.7%
Primary 2	648	3,362	23.1%	76.9%
Primary 3	766	3,994	19.9%	80.1%
Primary 4	445	3,702	12.4%	87.6%
Primary 5	391	2,476	15.6%	84.4%
Primary 6	450	2,278	19.1%	80.9%

Attendance Rate

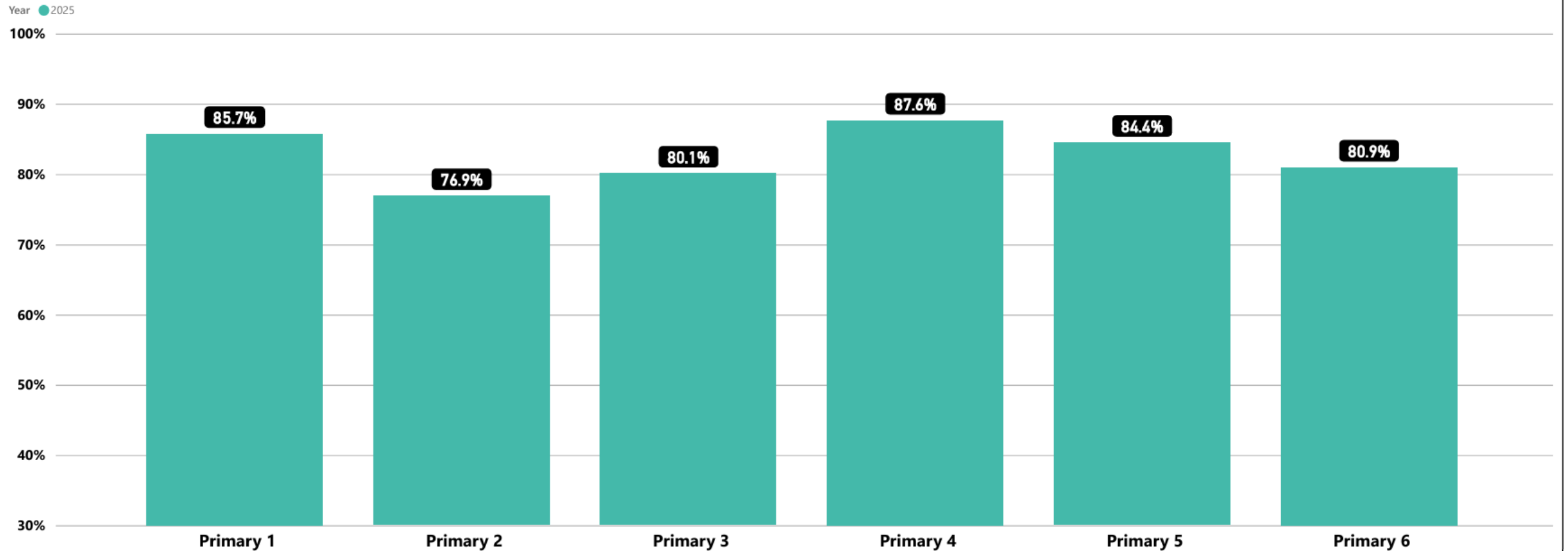
	Wemindji
Primary 1	85.7%
Primary 2	76.9%
Primary 3	80.1%
Primary 4	87.6%
Primary 5	84.4%
Primary 6	80.9%

CSB Attendance Rate

	Attendance Rate - CSB
Primary 1	75.5%
Primary 2	77.7%
Primary 3	77.0%
Primary 4	76.3%
Primary 5	75.4%
Primary 6	76.1%

- Under 90% is considered poor attendance
- Many students are sleeping in
- Spike in absenteeism after the holidays and tournaments

Attendance Rate by Level



- 17-23% of children are not attending school on a regular basis
- Attendance rate at high school level = 67% (33% not attending)

Cree languages in Wemindji



89%

Were able to conduct a conversation in **Cree**



54%

Cree was the language most often spoken at home



In Wemindji, **language retention is lower** than the regional average.

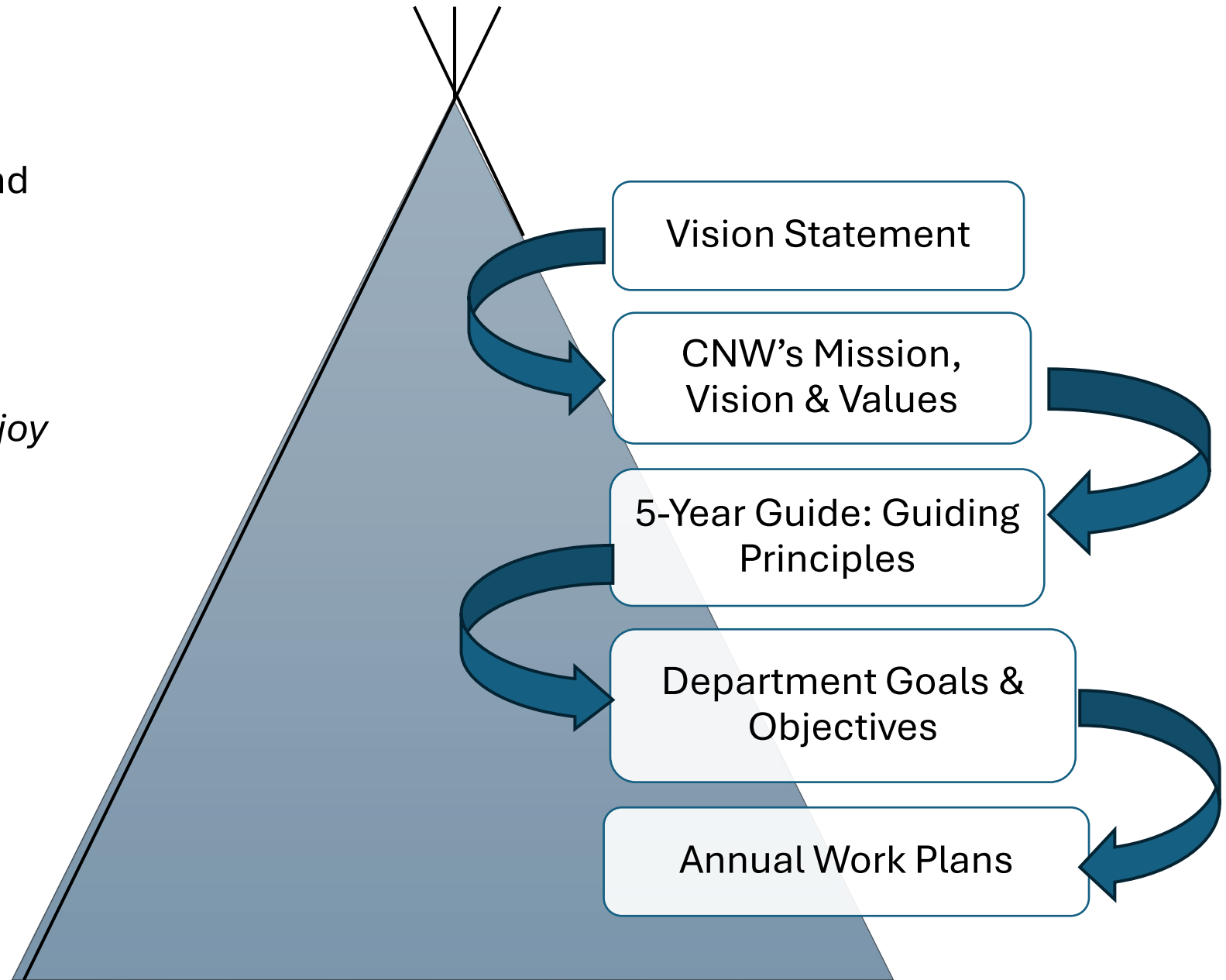
How have you structured your administration to respond to these issues?



Our Structure

Starts with our people and their vision.

“Our vision is of a clean, healthy, safe and secure community where we enjoy an exceptionally good quality of life.”



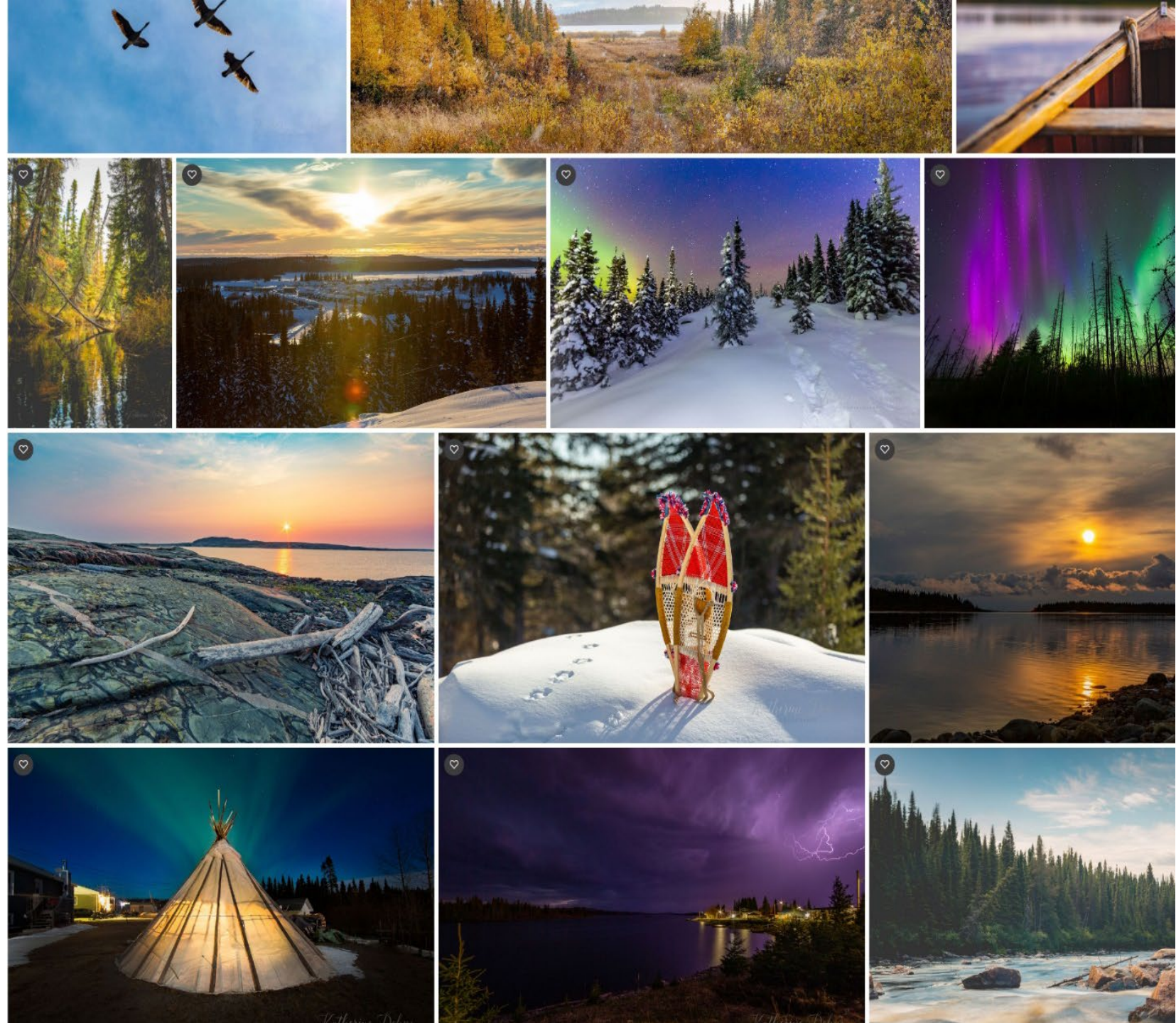


5-Year Plan







Wiichiiwaausinihiikin



Guide for 2023-2028



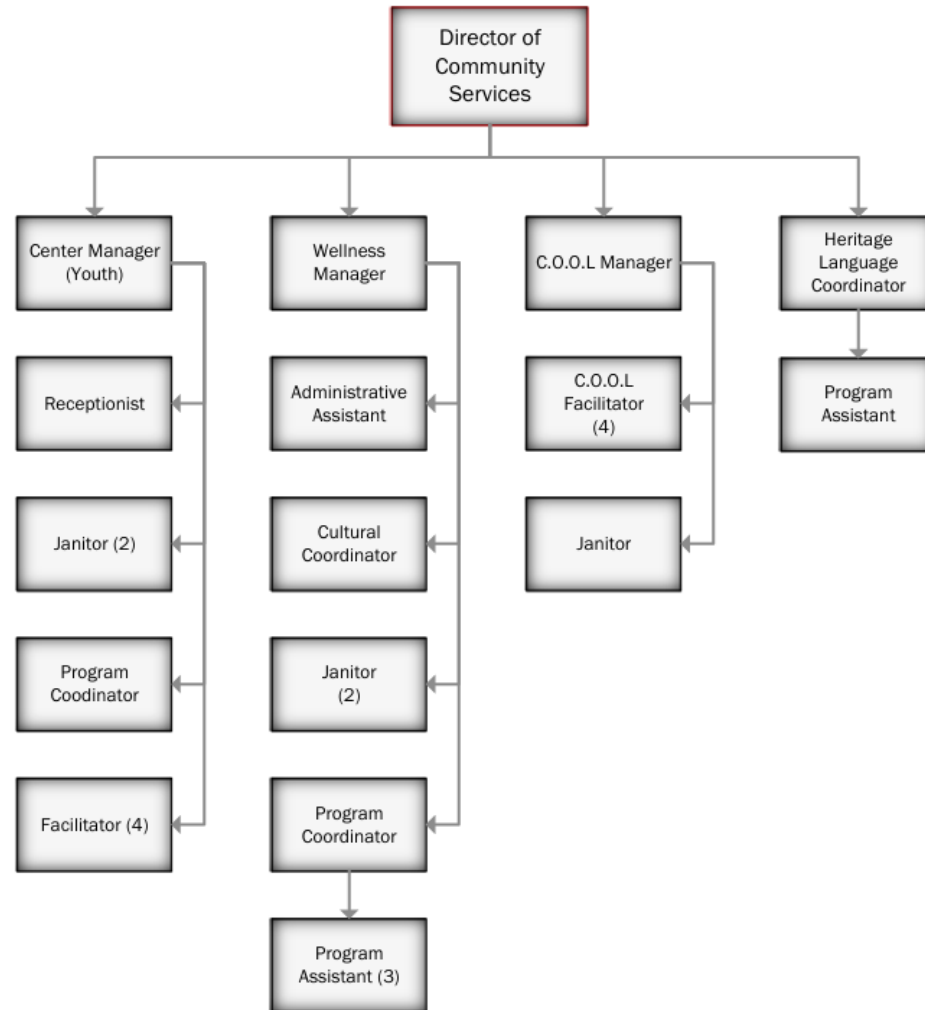
The Plan at a Glance

Strategic Orientations	 <p>1. Enhancing organizational planning, effectiveness and implementation</p>	 <p>2. Maintaining & preserving our language & culture.</p>	 <p>3. Facilitating community engagement & communication</p>	 <p>4. Building capacity in our people</p>	 <p>5. Preserving and promoting awareness of the environment</p>	 <p>6. Promoting and maintaining a healthy lifestyle & advancing the well-being of our people.</p>
Strategic Goals	<p>1.1. Develop a strategic plan and set priorities.</p> <p>1.2. Establish appropriate targets and benchmarks.</p> <p>1.3. Ensure implementation of the strategic plan by all departments.</p> <p>1.4. Evaluate/monitor the progress and efficiency of the strategic plan.</p> <p>1.5. Strengthen IT infrastructure.</p> <p>1.6. Maintain high level of quality standards.</p> <p>1.7. Document processes and procedures</p> <p>1.8. Develop a comprehensive housing strategy.</p>	<p>2.1. Practice our Cree culture and speak the language in our daily lives and work.</p> <p>2.2. Develop Cree culture and language instructors, facilitators.</p> <p>2.3. Create spaces, relationships, and opportunities for passage of knowledge from Cree experts.</p> <p>2.4. Foster the usage of the Cree language.</p>	<p>3.1. Develop a Communication Strategy Plan.</p> <p>3.2. Increase community engagement in all aspects through meetings, consultations, & programs.</p> <p>3.3. Ensure all feedback, consultations are being conducted.</p> <p>3.4. Create and implement the Action Plan.</p> <p>3.5. Enhance program and services.</p> <p>3.6. Develop, launch and maintain the CNW's website.</p>	<p>4.1. Create a comprehensive Action Plan.</p> <p>4.2. Compile and analyze data to develop ongoing training plans.</p> <p>4.3. Reactivate/Update CNW Succession Plan.</p> <p>4.4. Promote and provide professional opportunities for staff to grow, learn and build their teams.</p> <p>4.5. Establish partnerships with external entities.</p> <p>4.6. Conduct a needs assessment with the community on the programs and services offered.</p>	<p>5.1. Educate ourselves and the public by creating awareness of eco-friendly practices.</p> <p>5.2. Identify the environmental and wildlife risk factors that impact the community and climate.</p> <p>5.3. Implement and monitor the Waste Management Master Plan.</p> <p>5.4. Develop a conversion plan to ensure the CNW meets the environmental standards.</p>	<p>6.1. Create awareness around living a healthy and active lifestyle and promoting work/life balance.</p> <p>6.2. Provide opportunities for community members to obtain meaningful training and employment.</p> <p>6.3. Promote and provide health & wellbeing programs and services in the community that foster healthy lifestyles, a healthy environment, and traditional teachings/activities.</p> <p>6.4. Improve housing infrastructure.</p> <p>6.5. Nurture our sense of community spirit.</p>



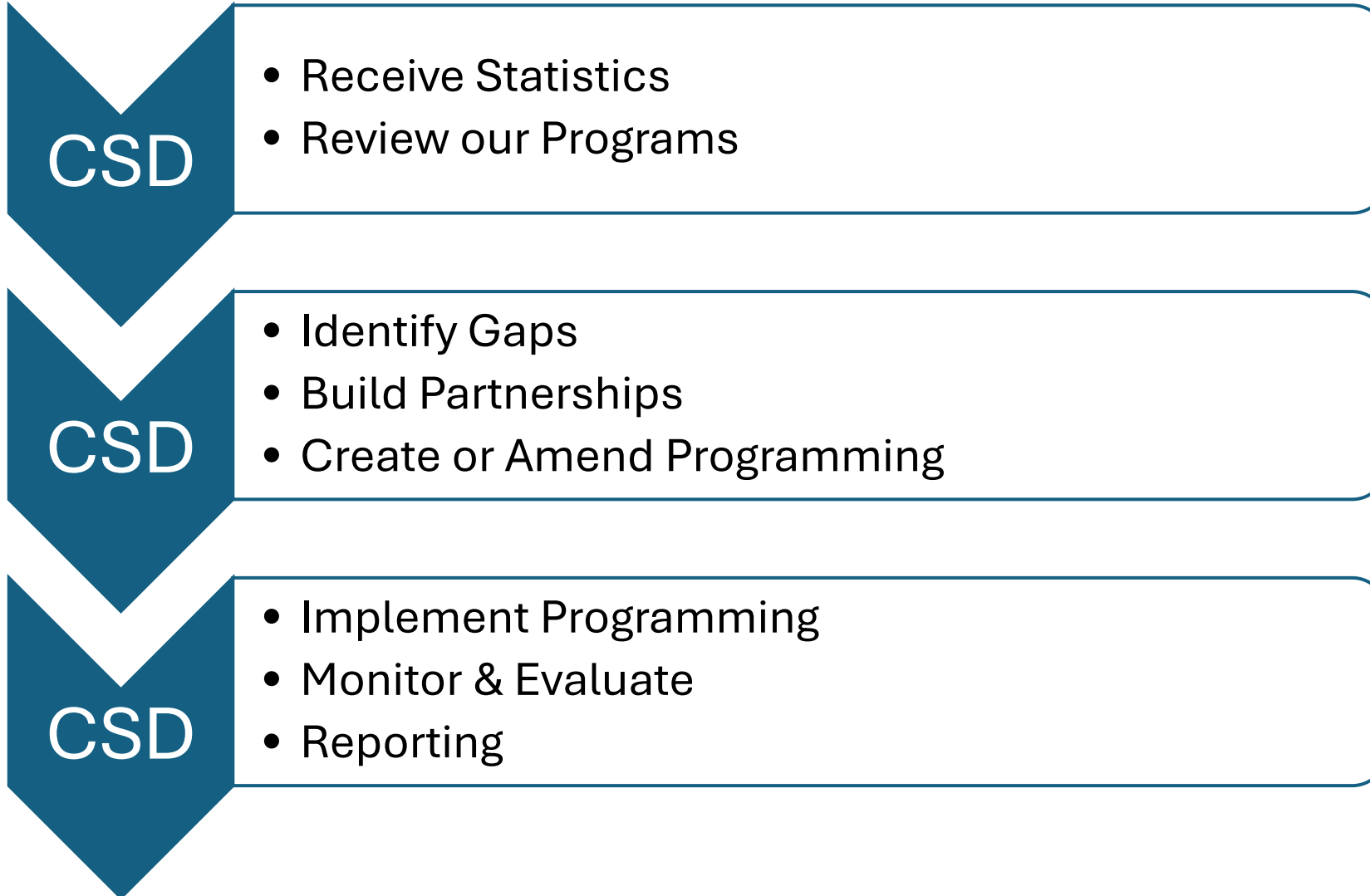
• Community Services Department oversees:

- Youth dept
- COOL After-school program
- Wellness & Culture
- Language & Heritage





PLANNING PROCESS



How do you
collaborate with
regional entities?





COMMITTEE MEMBERS:

CNW reps (Director of Community Services,
Public Health Officer, Wellness Manager,
Director of Sports & Leisure)

Youth Chief

Elders Council Representative

Cree Health Board CMC Director

Cree Health Board CMC Community
Organizer

Cree School Board CEA

CNG Justice Dept

Miyupimaatsiun Committee

Cree Health Board Public Health

January 28, 2026



Role:

- Identify Health and social issues affecting the community and causes
- Recommendations on solutions aimed at addressing challenges
- Preventing overlap and identifying gaps
- Ensure collaboration and partnerships with local and regional entities

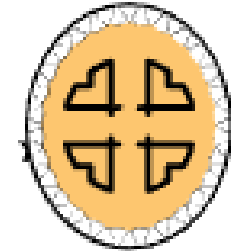
Miyupimaatsiun Committee

Cree Health Board Public Health

January 28, 2026

Current Partnerships

- Miiyupimaatisiunn Committee Law
- Regular meetings with Chief & Council – updates
- Annual local Engagement with Entities on programs and services from entities to work in Collaboration – 2021, 2022, 2023 and 2024
- Community coffee break– introduce committee & topics for each
- Mental Health Worker under Wellness-partnership
- Crisis Shelter Partnership (CNW & CHB/CMC – receive approximately 12 clients annually)



Current Partnerships cont'd

- Local health events
- Wellness Programming - Youth Café (anti-bullying initiative bi-weekly from August - June - 60 students 20%)
- COOL Afterschool Program – 15% of students
- Sports Academy approximately 70 % students enrolled in the program –B.E.A.R Program
- Youth Centre Programming and its activities; Mental Health training, Land-Based programs
- CSB on school attendance



Community Feedback & Data

- **2017 Community Consultation on Health and Social issues**
- **2022 Community Service consultations – Youth, Elders, Community members – Afterschool program**
- **2022 Miiyupimaatisiunn Survey on social issues (110)**
 - **Housing**
 - **Mental Health (bullying, Suicides attempts/ideation, domestic violence, Anxiety)**
 - **Cell phone or Social media addictions**
 - **Parental involvement**
 - **Alcohol & Drugs, Gambling, Tournaments**
 - **Concerns on Cultural and Language**
- **2023 Education Forum consultation – for improving school attendance, Cree Language and Culture – incentive programs, mental Health (159)**
- **2024 Cree Health data on diabetes**
- **2024 Cultural and Language Consultations Survey (109)**
- **2024 CNW meeting of local committees – 4 Pillars funding**
- **2024 EEPF statistics 90% calls are alcohol/drug related, Justice 95 % court cases are alcohol related**
- **2024 & 2025 School attendances rates – very concerning**
- **2025 Miiyupiimaatisiun Gathering -Wiichiwaauwin Helpline 2024-2025**



Community Feedback/Recommendations

- More Mental Health programming – awareness workshops
 - Land-based Excursions, Cree Culture & language programs
 - Family-orientated activities
 - More weekend programming
 - Enhancing current programs & services
 - Integrating our current programs & services with other resources or entities
 - Incentive programs or activities
 - Improve working in partnerships
-